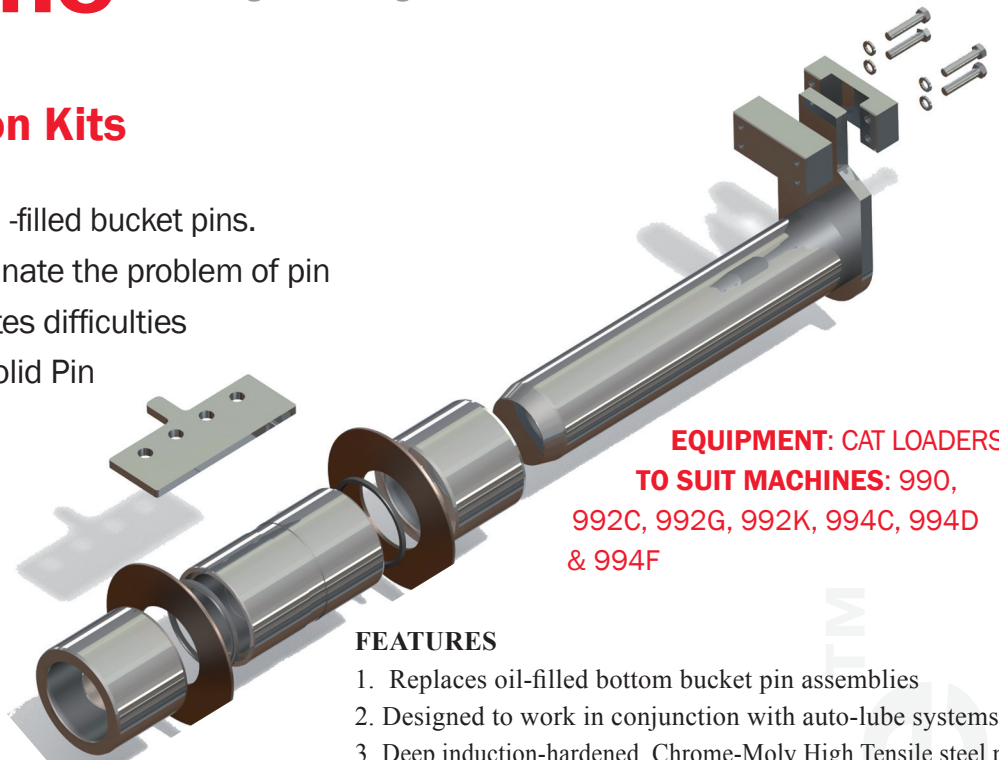


Solid Pin Conversion Kits

Used as a replacement for oil-filled bucket pins. Uniquely engineered to eliminate the problem of pin seizure which normally creates difficulties in extracting oil-filled pins. Solid Pin Kits have proven to be one of Geographe's most popular kit choices

Loaders are commonly used in severe environmental conditions associated with coal and iron ore mining. The original pins used in these loaders are designed to be 'sealed for life' however, over time, particles of clay, dirt and other abrasive materials can force their way into the seal clearance, eroding seal lips. This causes the seals to leak, draining oil until eventually, the bearings seize up. Sometimes loaders must also endure the effects of a corrosive environment e.g. coal machinery washes that use saline water causing corrosion of the pin to the bucket bore. Whilst it may not affect operation of the machinery, it complicates change outs particularly when old pins need to be cut out - extending downtime.



**EQUIPMENT: CAT LOADERS
TO SUIT MACHINES: 990,
992C, 992G, 992K, 994C, 994D
& 994F**

FEATURES

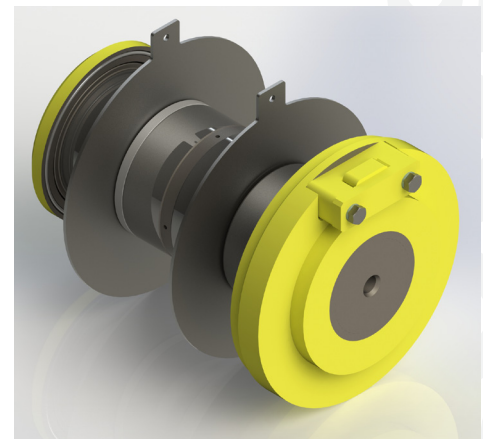
1. Replaces oil-filled bottom bucket pin assemblies
2. Designed to work in conjunction with auto-lube systems
3. Deep induction-hardened, Chrome-Moly High Tensile steel pin
4. Molykoted pins and the internal surface of bushes
5. Bushes designed with optimal clearance

BENEFITS

1. Kits allow faster and simpler bucket and parts changes
2. Upgrade in material and hardness for increased operational life
3. Reduction in maintenance time
4. Molykote reduces corrosion in the static bushes and friction in moving bush.
5. Easier dismantling due to seals in the static bushes which stop the ingress of corrosive elements.

Kit Details

Equipment	Description	Geographe Part
CAT 988B	KIT; SOLID PIN	11525205
CAT 990	KIT; SOLID PIN CONVERSION	11511600
CAT 992C	KIT; SOLID PIN, BOTTOM, HIGH LIFT	11467820
CAT 992C	KIT; SOLID PIN, STANDARD LIFT: BOTTOM	11467776
CAT 992C	KIT; SOLID PIN, STANDARD & HIGH LIFT, BOTTOM	11467831
CAT 992G	KIT; PIN & BUSH: TYPE "A"	11526368
CAT 992G	KIT; PIN & BUSH: TYPE "B"	11526369
CAT 992G	KIT; TOP, PIN & BUSH: TYPE "C"	11526970
CAT 992G	KIT; PIN & BUSH: TYPE "E"	11526371
CAT 992G	KIT; PIN & BUSH: TYPE "F"	11526372
CAT 992G	KIT; PIN & BUSH: TYPE "G"	11526373
CAT 992G	KIT; PIN & BUSH: TYPE "K"	11526374
CAT 992G	KIT; PIN & BUSH: TYPE "Y"	11526375
CAT 992K	KIT; PIN ASSY: MOD; STICK TO BUCKET;992K	11536753
CAT 994 D/F	KIT; SOLID PIN: DOGBONE MOD	11525120
CAT 994 D/F	KIT; SOLID PIN, TOP	11430200
CAT 994 D	KIT; SOLID PIN, BOTTOM	11430189
CAT 994 F	KIT; SOLID PIN, BOTTOM	11531104



Geographe's highly anticipated Solid Pin Kit to suit 992K loaders was released in October 2013 in response to high customer demand.

Conversion Kit cost Benefits

OEM oil-filled Pin & Collet set cost \$106,686*				
Life Cycle	3,500 hrs	7,000 hrs	10,500 hrs	Total
Cost of Parts	\$17,062	\$17,062	\$17,062	\$51,186
Cost of Labour	\$18,500	\$18,500	\$18,500	\$18,500
Downtime	48 hrs	48 hrs	48 hrs	144 hrs
Total cost	\$35,562	\$35,562	\$35,562	\$106,686

Geographe Solid Pin Kit cost \$46,136*				
Life Cycle	3,500 hrs	7,000 hrs	10,500 hrs	Total
Cost of Parts	\$20,108	\$0	\$20,108	\$40,216
Cost of Labour	\$2,960	\$0	\$2,960	\$5,920
Downtime	12 hrs	0 hrs	12hrs	24 hrs
Total cost	\$23,068	\$0	\$23,068	\$46,136

* Costs based from on-site research conducted on CAT 994 Loaders in 2011. To be used as an estimate only.



Choose Geographe

- All products Australian-manufactured.
- Geographe can typically supply parts sooner than standard industry lead times
- Geographe is endorsed by ISO9000 Quality, AS/NZS4801 Safety and AS/NZS ISO 14001 Environment accreditations
- Raw materials are sourced from the highest quality suppliers and metallurgically tested to ensure a superior end product

Equipment modification required

Modification to the machinery is required to fit Geographe Solid Pin Kits.

Contact us for more information on free call 1800 999 240 or visit our website at www.geographe.com.au



solid pin kit - spk